

physics[®] forceps



DIRECTA

DirectaDentalGroup

DIRECTA topdental **ORSING** parkell **physics** forceps RØNVIG TrollDental Sendoline **CONTACEZ**

physics[®] forceps

What is it?

The Physics Forceps are an atraumatic extraction system that provides a simple, predictable and unconventional method of extracting teeth regardless of a practitioner's extraction experience, or the condition of the tooth, while providing a positive patient experience.

How does it work?

The Physics Forceps operate as an elevator, rather than forceps, using first-class lever mechanics. One handle is connected to a "bumper," which acts as the fulcrum, that is placed deep in the vestibule. The other handle is connected to the "beak", which is positioned most often on the lingual or palatal root of the tooth into the gingival sulcus. No aspect of the instrument grasps the crown and there is no advanced elevation needed. Once the instrument is properly placed, the handles are rotated a few degrees with only wrist movement in a slow, steady and controlled manner - no squeezing!

When to use?

The Physics Forceps are effective in most cases, including decayed or broken down teeth, endodontically treated teeth, fractured or fragile teeth, curved or long rooted molars and cuspids, or any tooth that would historically be challenging with conventional instrumentation. The Physics Forceps are ideal for implantologist that wants to preserve the surrounding bone and tissue in preparation for dental implants

Why it works?

The Physics Forceps place a constant and steady load on the tooth, allowing "creep" to build, releasing hyaluronic acid, resulting in the break down of the periodontal ligaments. Studies have proven this breakdown occurs in a much faster time period than conventional methods that employ intermittent, rocking or brute strength types of forces.

DENTISTRY ☞ TODAY	DENTISTRY ☞ TODAY	DENTISTRY ☞ TODAY	DENTISTRY ☞ TODAY	DENTISTRY ☞ TODAY	DENTISTRY ☞ TODAY	DENTISTRY ☞ TODAY	DENTISTRY ☞ TODAY	DENTISTRY ☞ TODAY	DENTISTRY ☞ TODAY	DENTISTRY ☞ TODAY	DENTISTRY ☞ TODAY
PRODUCTS 2019	PRODUCTS 2018	PRODUCTS 2017	PRODUCTS 2016	PRODUCTS 2015	PRODUCTS 2014	PRODUCTS 2013	PRODUCTS 2012	PRODUCTS 2011	PRODUCTS 2010	PRODUCTS 2009	PRODUCTS 2008



**Physics
Forceps®
Standard
Series**

page 4-5



**Physics
Forceps®
Molar
Series**

page 6-7



**Physics
Forceps®
Pedodontic
Series**

page 8-9

Physics Forceps® Standard Series

The Physics Forceps Standard Series extraction instruments can be utilized on all teeth in the mouth with the exception of third molars. In some instances, due to patient access and the design of the instruments, the Standard Series may not access "hard-to-reach" second molars. In these cases, the Molar Series should be utilized.

GMX 100-200 Standard Series kit

GMX 100UR - Upper Right

GMX 100UL - Upper Left

GMX 100UA - Upper Anterior

GMX 200LU - Lower Universal

Also Includes: 24 Bumper Guards

**GMX 200LU
Lower Universal**
6 Bumper Guards

**GMX 100UA
Upper Anterior**
6 Bumper Guards

**GMX 100UR
Upper Right**
6 Bumper Guards

**GMX 100UL
Upper Left**
6 Bumper Guards

Bumper Guards

The bumper guards are disposable (single-use) made with non-latex materials.

Bumper Guards for GMX50,100-200 standard and pedodontic Series

Package of: 24 pcs, 48 pcs, 96 pcs



**Bumper Guards for GMX50,
100-200 standard and pedodontic Series**
Package of: 24 pcs, 48 pcs, 96 pcs



Physics
Forceps®
Standard
Series



Physics Forceps® Molar Series

Our patented Beak & Bumper technique makes difficult molar extractions easier than ever, with just two instruments that allows for bumper placement on the buccal or lingual side of the tooth. This is unique to the Molar Series. The Molar Series is an excellent addition to the Standard Series to access “hard-to-reach” second molars and erupted third molars that you cannot access with the Standard Series.

GMX 400-Molar Series Kit

GMX 400EZ1 Instrument
GMX 400EZ2 Instrument
Also Includes: 12 Bumper Guards

GMX 400EZ1

6 Bumper Guards

GMX 400EZ2

6 Bumper Guards

Bumper Guards

The bumper guards are disposable (single-use) made with non-latex materials.

Bumper Guards for GMX 400 Molar Series

Package of: 24 pcs, 48 pcs , 96 pcs



Bumper Guards for GMX 400 Molar Series

Package of: 24 pcs, 48 pcs , 96 pcs



**Physics
Forceps®
Molar
Series**



EZ1



EZ2



Physics Forceps® Pedodontic Series

The Physics Forceps Pedodontic Series extraction instruments are specially designed for primary teeth.

GMX 50 Pedodontic Series kit

GMX 50UR - Upper Right – Upper molars, Upper canines

GMX 50UL - Upper Left – Upper molars, Upper canines

GMX 50UA - Upper Anterior - Incisors

GMX 50LU - Lower Universal – All lower primary teeth

Also Includes: 24 Bumper Guards

GMX 50LU Lower Universal

Pedodontic Lower Universal – Extracts all lower primary teeth.
6 Bumper Guards

GMX 50UA Upper Anterior

Pedodontic Upper Anterior - Extracts incisors teeth.
6 Bumper Guards

GMX 50UR Upper Right

Pedodontic Upper Right – Extracts Upper molars, Upper canines teeth.
6 Bumper Guards

GMX 50UL Upper Left

Pedodontic Upper Left – Extracts Upper molars, Upper canines teeth.
6 Bumper Guards

Bumper Guards

The bumper guards are disposable (single-use) made with non-latex materials.

Bumper Guards for GMX50,100-200 standard and pedodontic Series

Package of: 24 pcs, 48 pcs, 96 pcs



**Bumper guards for GMX50,
100-200 standard and pedodontic Series**

Package of: 24 pcs, 48 pcs, 96 pcs



**Physics
Forceps®
Pedodontic
Series**





Golden Package Combo Standard and Molar Kit

GMX 400 Molar Series Kit
EZ1 & EZ2 Instruments
GMX 400 Series Bumper Guards, 12 pcs

GMX 100-200 Standard Series Set
Upper Right, Upper Left,
Upper Anterior & Lower Universal Instruments
GMX50,100-200 Bumper Guards, 24 pcs



physics
for cepts

Product Numbers

Kit

GMX 100-200 Standard Series Kit

GMX 100UR - Upper Right
 GMX 100UL - Upper Left
 GMX 100UA - Upper Anterior
 GMX 200LU - Lower Universal
 Also Includes: 24 Bumper Guards

506127

GMX 400 Molar Series Kit

GMX 400EZ1 Instrument
 GMX 400EZ2 Instrument
 Also Includes: 12 Bumper Guards

506126

GMX 50 Pedodontic Series Kit

GMX 50UR - Upper Right – Upper molars, Upper canines
 GMX 50UL - Upper Left – Upper molars, Upper canines
 GMX 50UA - Upper Anterior - Incisors
 GMX 50LU - Lower Universal – All lower primary teeth
 Also Includes: 24 Bumper Guard

506125

Golden Package Combo kit

GMX 100-200 series kit
 GMX 400 kit
 Also includes: GMX50,100-200 bumper guards, 24 pcs, GMX 400 bumper guards 12

506128

Forceps

GMX 200LU - Lower Universal, also includes 6 Bumper Guards
 GMX 100UA - Upper Anterior, also includes 6 Bumper Guards
 GMX 100UR - Upper Right, also includes 6 Bumper Guards
 GMX 100UL - Upper Left, also includes 6 Bumper Guards
 GMX 400EZ1 - Molar Series, also includes 6 Bumper Guards
 GMX 400EZ2 - Molar Series, also includes 6 Bumper Guards
 GMX 50LU - Pedodontic Lower Universal – Extracts all lower primary teeth, also includes 6 Bumper Guards
 GMX 50UA - Pedodontic Upper Anterior - Extracts incisors teeth, also includes 6 Bumper Guards
 GMX 50UR - Pedodontic Upper Right – Extracts Upper molars, Upper canines teeth, also includes 6 Bumper Guards
 GMX 50UL - Pedodontic Upper Left – Extracts Upper molars, Upper canines teeth, also includes 6 Bumper Guards

506109
 506108
 506107
 506106
 506105
 506104
 506100
 506101
 506102
 506103

Bumper Guards

GMX50,100-200 - Bumper guards for GMX50,100-200 standard and pedodontic series, 24 pcs
 GMX50,100-200 - Bumper guards for GMX50,100-200 standard and pedodontic series, 48 pcs
 GMX50,100-200 - Bumper guards for GMX50,100-200 standard and pedodontic series, 96 pcs
 GMX 400 - Bumper Guards for GMX 400 molar series, 24 pcs
 GMX 400 - Bumper Guards for GMX 400 molar series, 48 pcs
 GMX 400 - Bumper Guards for GMX 400 molar series, 96 pcs

506120
 506121
 506122
 506117
 506118
 506119

How
does
it work?



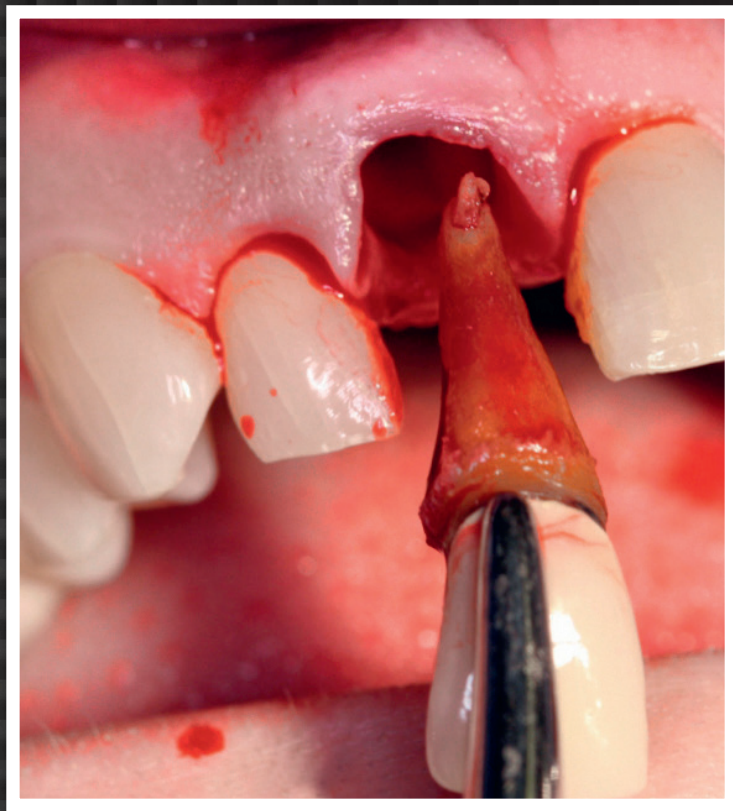
1|



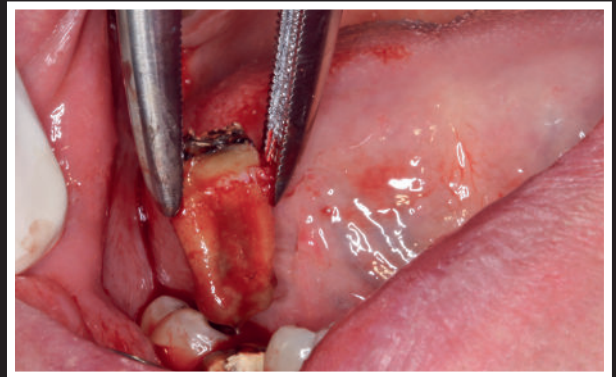
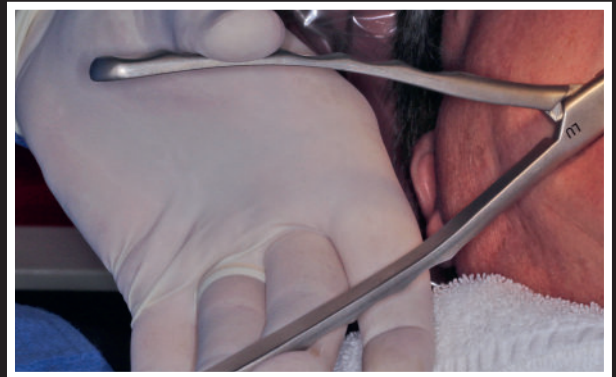
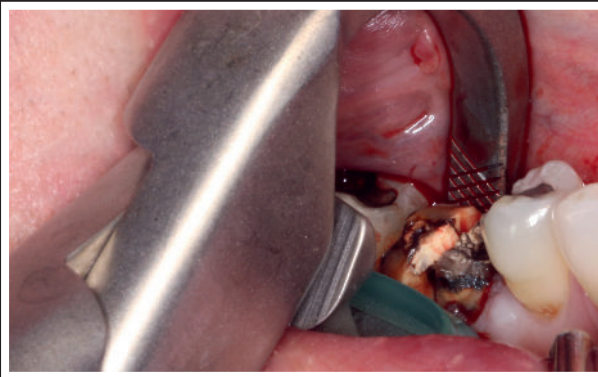
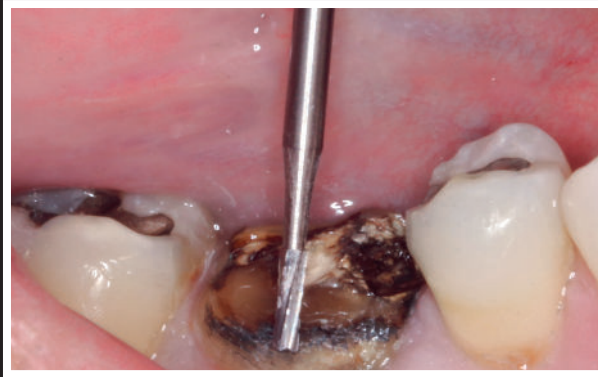
2|



3 |

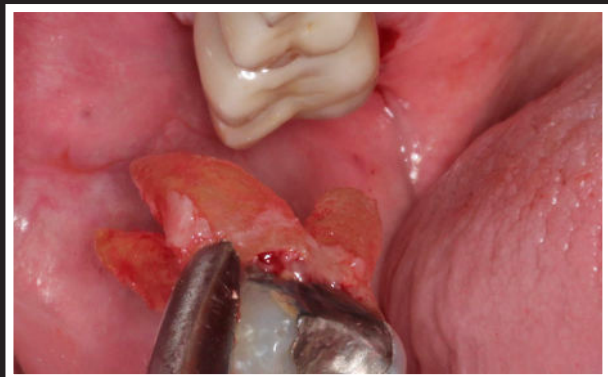
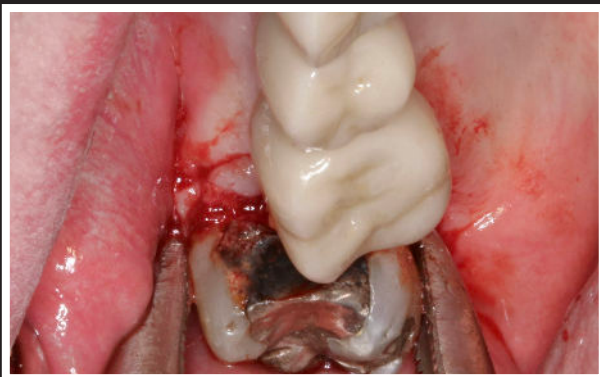
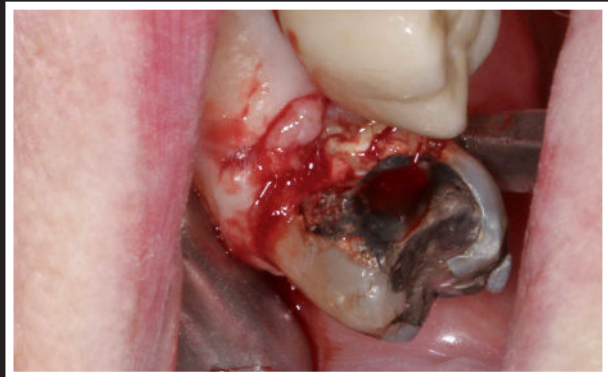
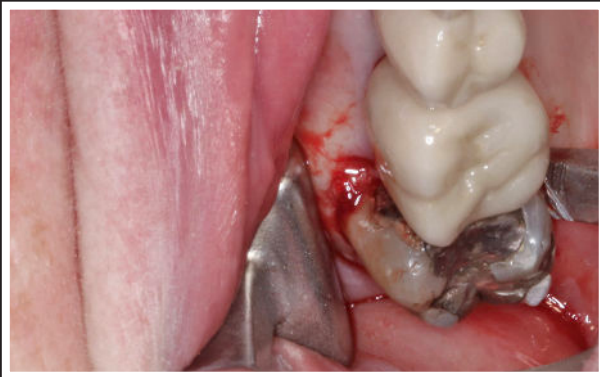


4 |



Lower Molar Extraction

Lower molars that have divergent roots should be sectioned and extracted as two separate individual roots. The narrow beak can easily engage each individual root of the sectioned tooth as depicted in this case. Upper molars do not need to be sectioned prior to using the Physics Forceps.



Upper Molar Extraction

In this case, the distal elevator is utilized prior to using the Physics Forceps to prevent any removal of tuberosity during the extraction of the tooth. Multi-rooted upper molars, even with narrow curved roots, do not need to be sectioned or elevated prior to use of the Physics Forceps. Do not deliver tooth with Physics Forceps-use our tooth delivery instrument Luxator Forte or conventional instrument.

Directa's products are developed,
tested and evaluated by our selected
team of highly-qualified and renowned
Swedish and international dental
professionals. The aim is to make life
easier for all dental professionals in
their daily clinical work

DIRECTA

DIRECTA AB

P.O. Box 723,
194 27 Upplands Väsby, SWEDEN
+46 8 506 505 75
info@directadental.com

DIRECTA INC

64 Barnabas Road, Unit 3
Newtown, CT 064 70, USA
203.491.2273
infousa@directadental.com

2022-06_22_REV01

DirectaDentalGroup

DIRECTA topdental **ORSING** parkell **physics** forceps **RÖNVIG** TrollDental **Sendoline** **CONTACTEZ**