

**Universal Body Shade**



**4733 - Transcend UB Syringe 1pk**  
1 x 4 g syringe Universal Body shade

**4734 - Transcend UB Syringe 4pk**  
4 x 4 g syringes Universal Body shade



**4757 - Transcend UB Singles 1pk**  
10 x 0,2 g singles Universal Body shade

**4817 - Transcend UB Singles 4pk**  
40 x 0,2 g singles Universal Body shade

**Complementary Shades**



**Transcend Syringe 1pk**  
4 g syringe

Dentin	1pk	Enamel	1pk
A1D	4727	EN	4731
A2D	4728	EW	4732
A3D	4729		
B1D	4730		



**Transcend Singles 1pk**  
10 x 0,2 g singles

Dentin	1pk	Enamel	1pk
A1D	4744	EN	4748
A2D	4745	EW	4749
A3D	4746		
B1D	4747		



**4726 - Transcend Syringe Intro Kit**  
1 x 4 g syringe of each shade:  
A1D, A2D, A3D, B1D, EN, EW, UB



**4814 - Transcend Singles Intro Kit**  
10 x 0,2 g singles of each shade:  
A1D, A2D, A3D, B1D, EN, EW, UB

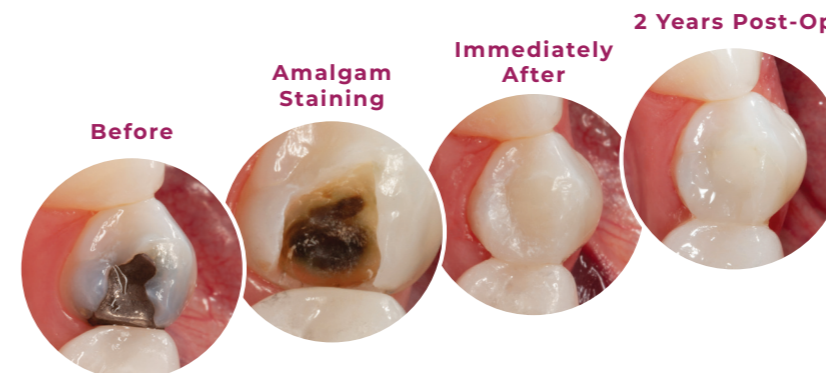
Pair Composite Wetting Resin with any Ultradent composite to improve instrument and composite glide when sculpting and contouring.



**3059 - Composite Wetting Resin Syringe 2pk**  
2 x 1,2 ml syringes

**TRANSCEND™**  
UNIVERSAL COMPOSITE

Restorations with  
**Just One Shade**



Courtesy of Dr. Jaleena Jessop.

Patient presented with recurrent decay on amalgam restoration on tooth #44. Tooth was restored using Transcend composite Universal Body shade. No opaquer was used as Transcend composite Universal Body shade had enough opacity to cover amalgam staining while blending in with the natural tooth color.

Follow Us!



© 2023 Ultradent Products, Inc. All rights reserved.

UPP 760-EU 10-2023

ULTRADENT.EU

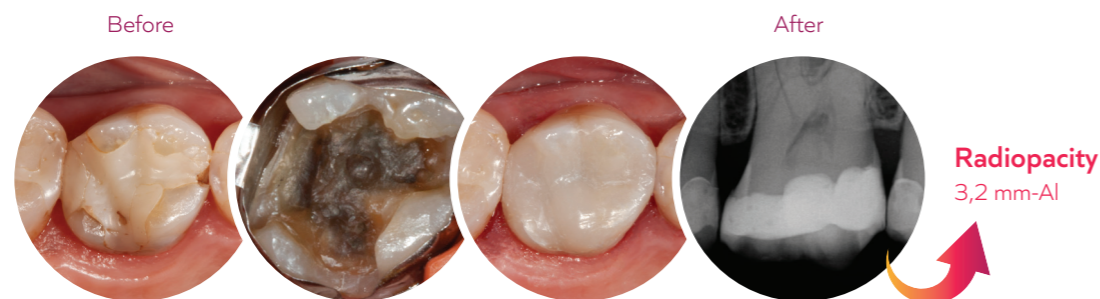


## ONE SHADE RESTORATIONS

### Composite Restoration

Patient presented with a failing composite restoration. Filling was removed, which revealed Amalgam staining and a mesial crack. The mesial crack was still a small, manageable size and therefore a direct bonded restoration could be done instead of an indirect crown restoration. Products used: Ultra-Etch™ etchant, and Peak™ Universal Bond adhesive. A very thin layer of A3 PermaFlo™ flowable composite was used for the initial layer. Transcend composite Universal Body shade was used to restore the tooth. Composite was adjusted according to occlusion and polished up beautifully.

Dr. Jaleena Fischer Jessop



### Universal Body Shade for Lifelike Esthetics

Patient presented with defective tooth color restoration and decay that were removed and replaced with Transcend composite Universal Body shade for lifelike esthetics.

Dr. Jaleena Fischer Jessop



### No Staining or Layering

Patient presented with discolored and defective distal buccal tooth color restoration on tooth #11 and mesial buccal on #12. Secondary caries beneath #12. Gingival recession caused the black triangle space seen. Defective restoration and caries were removed. Darker-yellowish dentin can be seen at the cervical area. Translucent enamel present. The preparation was etched and bonded per manufacturers' instructions, then Transcend composite Universal Body shade was placed to reduce interdental space. Transcend composite is able to mimic surrounding tooth color. No staining or layering was needed.

Dr. Adrian Goh



### Pediatric Restoration

12-year-old girl with severe hypocalcification and mottling of her upper incisors was very self-conscious of her teeth. Treatment was efficient, beautiful, and affordable for the patient. Transcend composite's Universal Body shade blended seamlessly. All four incisors were treated in less than an hour.

Dr. Susan McMahon



### Large Class I Restoration

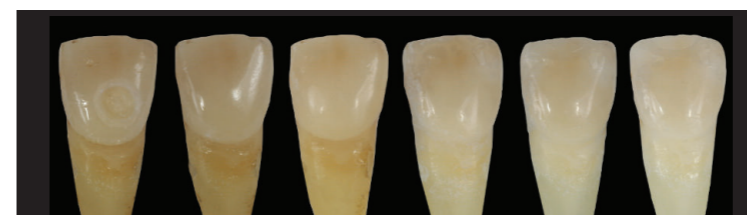
Large Class I restoration using Transcend composite Universal Body shade with fissure stain.

Dr. Yo-Han Choi



## Continually Matches SURROUNDING DENTITION

The following pictures of a tooth restored with Transcend composite show that the Universal Body shade has the capability of adjusting itself to continue to harmoniously match the surrounding dentition during the whitening process.



As a patient uses Opalescence™ teeth whitening, the restoration will continue to adapt to lighter shades.

## Revolutionary Dental COMPOSITE TECHNOLOGY

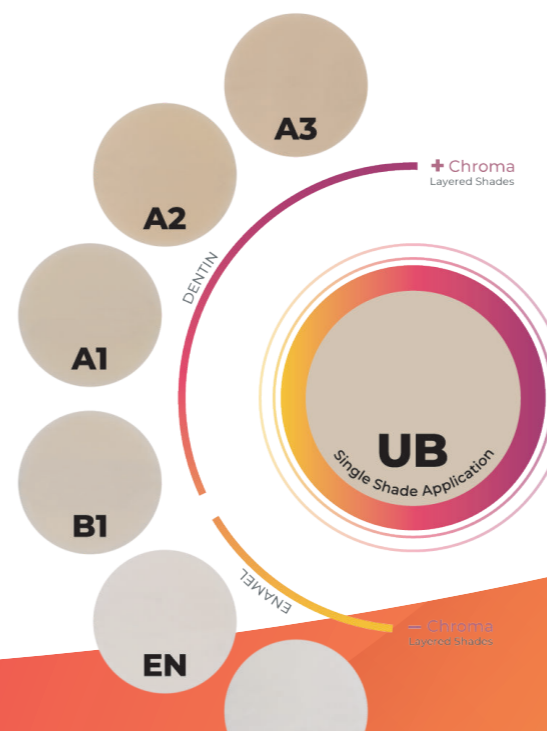
Transcend composite's nanohybrid formula has been designed with Ultradent's Resin Particle Match technology. The balanced refractive indices between resin and filler particles from that technology, combined with a carefully optimized tuning between translucency and opacity, allow Transcend composite to blend with most surrounding dentition with just one shade and without the use of a blocker.<sup>1</sup>



## Simply Beautiful Results FOR ANY RESTORATION

In addition to the Universal Body shade, Transcend composite also includes four dentin shades and two enamel shades for cases when a layering technique is appropriate.

For the reconstruction of anterior teeth with a noticeable difference between cervical and incisal areas (opaque and translucent regions), and/or for larger restorations, such as occasional large Class III and IV cases that lack tooth structure from which the Universal Body shade draws shade from, beautiful outcomes can be achieved through the layering of the additional dentin and enamel shades.



Technical Overview <sup>1</sup>	
Volumetric Shrinkage	1,6%
Compressive Strength	450,7 (MPa)
Hardness	60,3 (HK)
Flexural Strength	156,17 (MPa)
Flexural Modulus	11,85 (GPa)
Radiopacity	3,2 (mm-Al)
Depth of Cure	2,85 (mm)
& Fill by Volume	60-61%
% Fill by Weight	79%

## Transcend the Competition

Scan this QR code to see how Transcend composite and its Resin Particle Match technology is the best choice for clinicians who seek to improve their productivity and simplify their inventory control while providing excellent esthetic outcomes to their patients.

