

Shade
matching
just got
simpler.

3M™ Filtek™ Easy Match Universal Restorative



- ▶ Intuitive shade selection
- ▶ Naturally-adaptive opacity
- ▶ Reduced inventory

3M™ Filtek™ Easy Match Universal Restorative

Bright. Natural. Warm.

Just 3 shades deliver an excellent match to almost any patient's smile.

What you can expect:

- ▶ A simpler workflow for single-shade restorations
- ▶ Natural-looking results
- ▶ A streamlined system built on clinically proven nanotechnology
- ▶ Quick and intuitive shade selection both for anterior and posterior restorations

Experience shade matching made simple. Easy. Intuitive.

- Just 3 shades: Bright, Natural, Warm
- No complicated shade guide
- No blocker required

Simplicity without sacrifice.

Some simplified shading systems come with aesthetic drawbacks. Filtek Easy Match Universal Restorative both delivers an excellent shade match and blends with surrounding dentition, for natural-looking smiles.



“3M™ Filtek™ Easy Match Universal Restorative offers very good handling ability and I like the consistency when placing. The aesthetics of the finished product are extremely good and with the shade match being great in the anterior and posterior region.”

Dr Kunal Shah
Hendon, UK

Shade selection is intuitive and straight forward:

Chroma, or colour intensity, is only one of the components leading to a great shade match. Even a composite of the “right colour” can stand out from surrounding dentition if its **value** (relative lightness/darkness) or **opacity** is not a good match as well.

Together, the 3 shades of 3M™ Filtek™ Easy Match Universal Restorative cover the VITA classical shades – no blocker needed.

“I couldn’t be happier with the ability of 3M™ Filtek™ Easy Match Universal Restorative to blend in with the surrounding tooth structure. Shade choice is now easier than ever. The handling characteristics suit me well and I’m getting a nice lustre using nothing more than the tried and tested 3M™ Sof-Lex™ Polishing system”

Dr Nik Arolker
Derby, UK



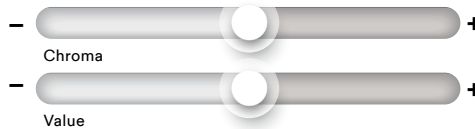
Representative example of Bright tooth shade.



Bright: low chroma, high value



Representative example of Natural tooth shade.



Natural: balanced, mid-range chroma and value



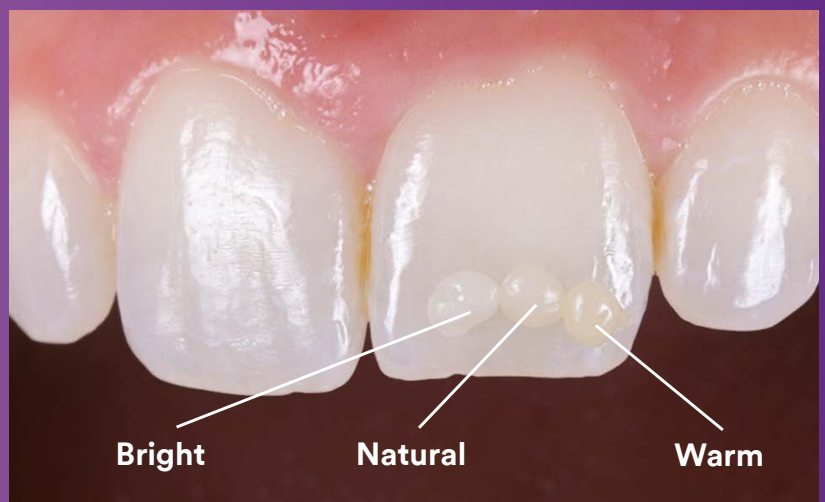
Representative example of Warm tooth shade.



Warm: high chroma, low value

Primary benefits you’ll love

- ▶ Excellent shade match for most anterior and posterior restorations
- ▶ Quick, easy and intuitive shade selection without sacrificing opacity
- ▶ Simplified single-layer restorations, with no blocker needed
- ▶ Streamlined inventory helps reduce waste of infrequently used shades
- ▶ Firm handling
- ▶ Suitable for composite warming, which lowers extrusion force¹ without changing physical properties²



1. Internal data.

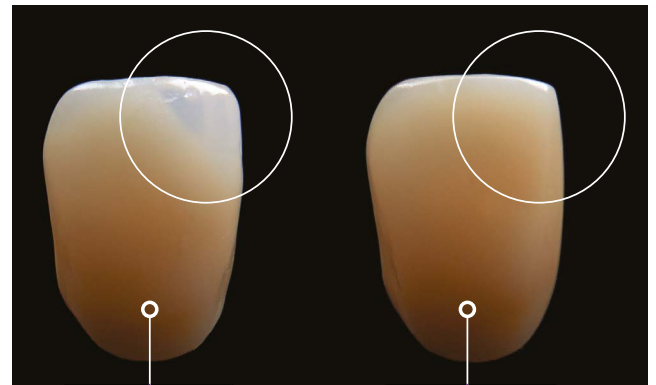
2. When warmed according to our IFU (capsules: up to 70°C for up to 1 hour).

How does it work?

With the power of naturally-adaptive opacity.

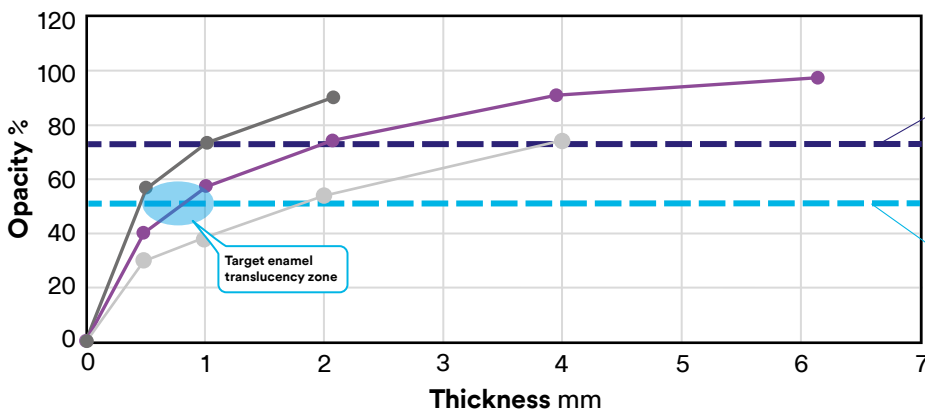
Unlike some single-shade systems, 3M™ Filtek™ Easy Match Universal Restorative doesn't need a blocker to mask the darkness of the oral cavity in anterior restorations. Its naturally-adaptive opacity delivers Enamel-like translucency at thicknesses of 0.5–1mm – exactly where you need it for the bevel and incisal edge. In thicknesses ≥ 2 mm everywhere else, it delivers a dentine-like opacity.

All composites become more translucent when applied in thinner layers. But the naturally-adaptive opacity of Filtek Easy Match Universal Restorative is optimally aligned with both dentine and enamel, helping it blend with surrounding tooth structure and delivering a natural look.



Competitor A
single shade
(No blocker used)

3M™ Filtek™ Easy Match
Universal Restorative,
Natural Shade
No blocker needed



Dentin value

3M™ Filtek™ Easy Match shows dentine-like opacity at thicknesses ≥ 2 mm

Enamel value

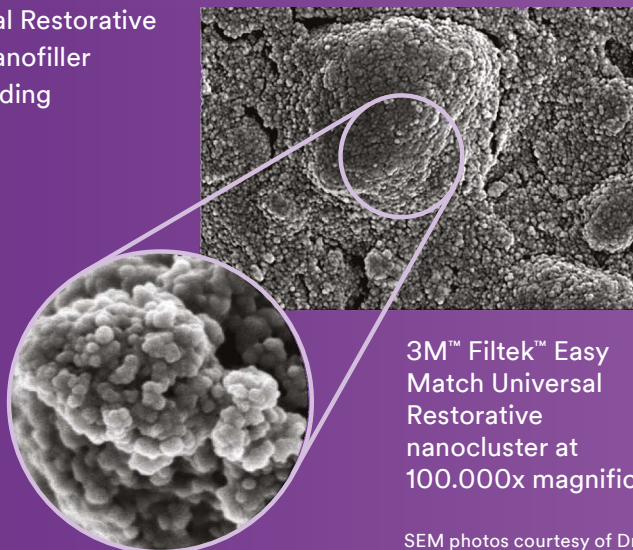
3M™ Filtek™ Easy Match shows enamel-like translucency at thicknesses of 0.5–1mm

Source: 3M internal*

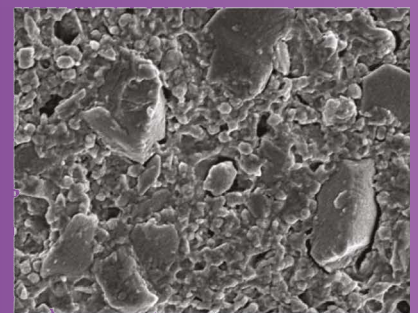
— 3M™ Filtek™ Supreme XTE Universal Restorative A2-D — Competitor A single shade (no blocker used)
— 3M™ Filtek™ Easy Match Universal Restorative

A closer look at TRUE nanotechnology

Filtek Easy Match Universal Restorative features the same **TRUE** nanofiller technology used in our leading Filtek Dental Restoratives. The unique nanoclusters enable excellent wear resistance and help the composite retain a smooth gloss.



3M™ Filtek™ Easy Match Universal Restorative nanocluster at 100,000x magnification



Leading competitive composite

SEM photos courtesy of Dr. J. Perdigao, University of Minnesota.

Part of the 3M™ Filtek™ Dental Restorative family

Trusted for more
than 50 years.
2 billion restorations
– and counting.

Powered by our **TRUE** nanotechnology, 3M™ Filtek™ Dental Restoratives have helped clinicians around the world create over 2 billion restorations. The Filtek family gives you the options you need for virtually any clinical situation: from anterior to posterior, high-end aesthetics to highly efficient procedures, and everything in between. Whether you need a universal, flowable or bulk-fill composite, anterior or posterior, the Filtek family gives you aesthetic and efficient solutions.



“3M™ Filtek™ Easy Match Universal Restorative has exceeded my expectations. Its colour blending ability is truly remarkable. With just three shades, I can mimic virtually every existing shade, making the colour-matching process incredibly easy.”

Dr. P Monteiro
Instituto Universitário Egas Moniz, Italy



Excellent polish
retention



Excellent strength
and wear resistance



Firm
handling



Safe for composite
warming and
injection moulding¹

1. Warm capsules up to 70°C for up to 1 hour.



3M™ Filtek™ Easy Match Universal Restorative – Bright

Code	Product information
6310B	20 Capsules, 0.2g/each
6320B	1 Syringe, 4g/each



3M™ Filtek™ Easy Match Universal Restorative – Natural

Code	Product information
6310N	20 Capsules, 0.2g/each
6320N	1 Syringe, 4g/each



3M™ Filtek™ Easy Match Universal Restorative – Warm

Code	Product information
6310W	20 Capsules, 0.2g/each
6320W	1 Syringe, 4g/each

3M™ Filtek™ Easy Match Universal Restorative – Intro kits

Code	Product information
6310K	60 Capsules, 0.2g/each: 20 each of shades Bright, Natural, and Warm
6320K	3 Syringes, 4g/each: 1 each of shades Bright, Natural, and Warm

3M™ Filtek™ Easy Match Universal Restorative – Value packs

Code	Product information
6310	100 Capsules, 0.2g/each: Natural shade only
6320	5 Syringes, 4g/each: Natural shade only



3M.com/FiltekEasyMatch



Warranty: 3M warrants this product will be free from defects in material and manufacture at the time of purchase. 3M MAKES NO OTHER WARRANTIES INCLUDING ANY IMPLIED WARRANTY OF MERCHANTABILITY OR FITNESS FOR A PARTICULAR PURPOSE. User is responsible for determining the suitability of the product for user's application. If this product is defective within the warranty period, your exclusive remedy and 3M's sole obligation shall be repair or replacement of the 3M product.

Limitation of liability: Except where prohibited by law, 3M will not be liable for any loss or damage arising from this product, whether direct, indirect, special, incidental or consequential, regardless of the theory asserted, including warranty, contract, negligence or strict liability.



Solventum
Charnwood Campus,
Bakewell Road Loughborough,
LE11 5TH, United Kingdom

Solventum 3M Healthcare Ireland Ltd
2 Cumberland Place,
Fenian Street, Dublin 2,
D02 H0V5, Ireland

*Source: 3M internal data.
Lot #098E53, #002EY8; Filtek™ Easy Match Universal Restorative Lot #9533695, #NE57998.

© Solventum 2024. Solventum, the S logo and Filtek are trademarks of Solventum or its affiliates. 3M and the 3M logo are trademarks of 3M. Other trademarks are the property of their respective owners.