

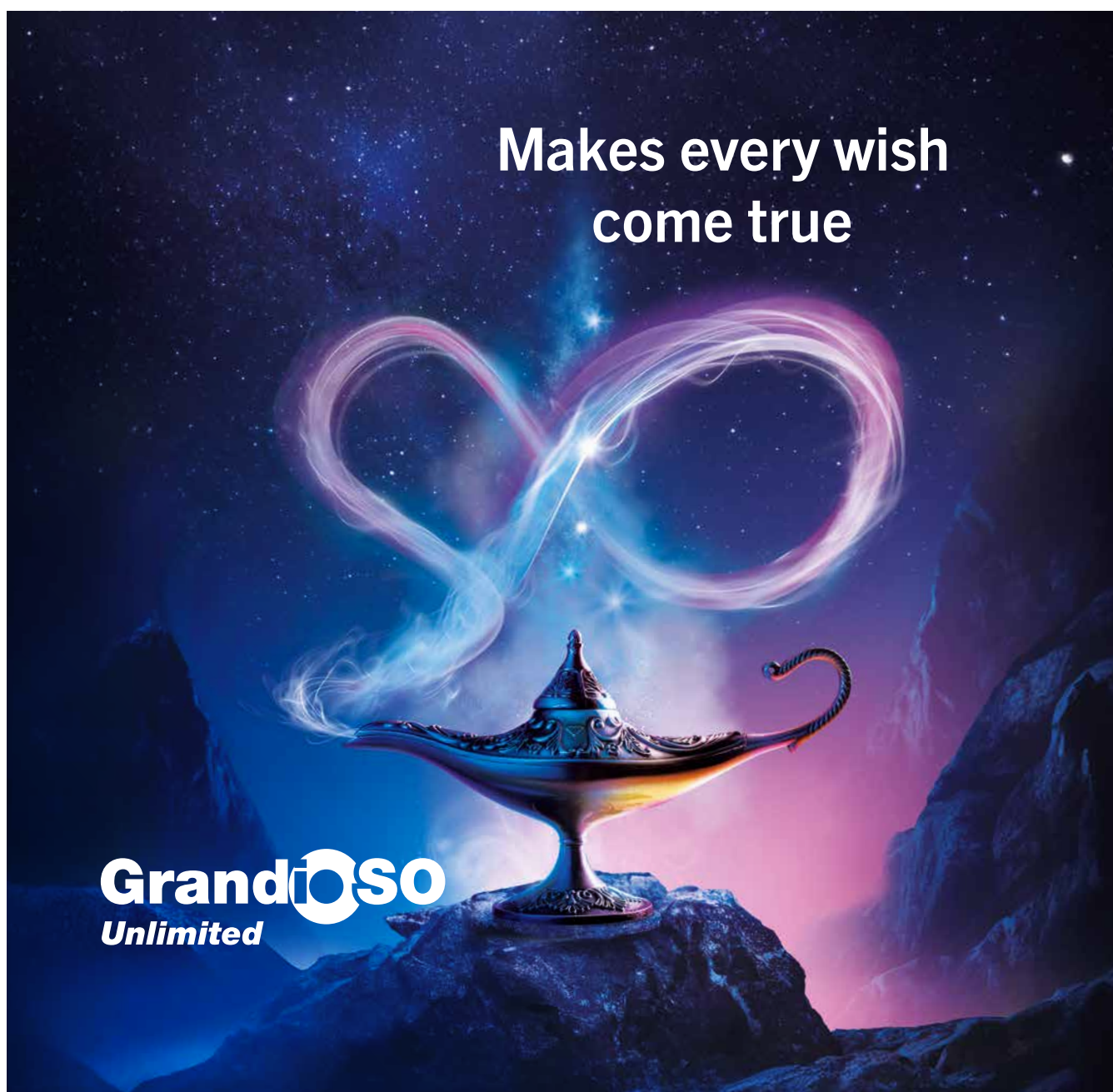
voco

HIGHLIGHTS

High-Performance-Composite
GrandioSO Unlimited –
4 mm universal composite
in five Cluster-Shades

Vital and suitable for daily use
Preservation of pulp vitality and
pulp capping with the biomaterial
MTA vpt (Vital Pulp Therapy)

Tasteful
Profluorid Varnish+BioMin
with bioglass is the new power
for enamel hardening



Makes every wish
come true

GrandioSO
Unlimited

GrandioSO Unlimited

4 mm universal composite in five Cluster-Shades

While aesthetic universal composites have to be layered and polymerised in 2 mm increments, which is complicated, bulk-fill composites offer the advantage of application into the cavity in increments of up to 4 mm. However, due to their insufficient aesthetics, bulk-fill composites are normally only used for the posterior region. VOCO has now resolved this issue with the new universal composite GrandioSO Unlimited. The aesthetic material can be applied in increments of up to 4 mm into the cavity and is indicated both for the anterior and posterior regions. You therefore only need one packable universal composite!

Cluster-Shade-System

In addition, with only 5 shades to stock, you are optimally positioned for your everyday practice and can significantly downsize your stock. Thanks to the simplified shade system, the 5 Cluster-Shades are able to cover all 16 classic VITA® shades:

GrandioSO Unlimited	A1				A2		A3			A3.5				A4		
VITA® classical	A1	B1	C1	D2	A2	B2	A3	B3	D4	A3.5	C2	C3	D3	B4	A4	C4

High-Performance-Composite

With an impressive filler content of 91 % by weight, GrandioSO Unlimited is setting new standards in the high-performance composites class when it comes to stability and strength. The low volume shrinkage of 1.44 % reduces the danger of poor marginal gap formation and marginal discolouration, and contributes to the most high-quality restorations.



Test pack

10 × 0.3 g Caps
 (2 each of × A1, A2, A3, A3.5, A4)
 + 10 × Futurabond U SingleDose,
 + shade card

REF 6257



Syringe set

5 × 4.5 g syringe
 (A1, A2, A3, A3.5, A4)
 + shade card

REF 6258

Caps set

75 × 0.3 g Caps
 (15 each of × A1, A2, A3, A3.5, A4)
 + shade card

REF 6270

Further presentations and shades can be found under www.voco.dental

The High-Performance-Composite

Universal
For anterior and posterior regions

Highest stability and strength
91 % w/w filler content

5 Cluster-Shades
Covering all 16 VITA® shades

No layering
Up to 4 mm increments

Excellent aesthetics
Outstanding polishability

MTA vpt

Maintaining pulp vitality in daily practice –
biocompatible and monomer-free

A biocompatible, stable and bacteria-tight pulp seal is essential to preserve the vitality of the pulp. With MTA vpt, VOCO offers a Mineral Trioxide Aggregate (MTA) material that has been specially designed for this purpose. Within the scope of Vital Pulp Therapy (VPT), MTA vpt can be used for cavity lining, indirect and direct pulp capping as well as for the treatment of the pulp following vital amputation (partial or complete pulpotomy).

As part of caries lesion management, residual carious dentine can also be reliably sealed with MTA vpt.

MTA vpt releases calcium and hydroxide ions during the setting phase, which stimulate the body's own regeneration processes and the formation of tertiary dentine. The resulting high pH is known for its bacteriostatic effect and supports remineralisation. In this way, MTA vpt creates a stable and bacteria-tight protective barrier – the optimum basis for maintaining the vitality of the pulp.

- MTA for everyday clinical practice – biocompatible, free of monomers
- High pH value (12) – known for its bacteriostatic effect
- Release of calcium and hydroxide ions – promotes formation of tertiary dentine and remineralisation
- Reliable pulp protection – mineralises to form a bacteria-proof seal
- Time-efficient – immediate further processing thanks to layering without pressure
- Easy handling – application with standard instruments, or directly from the capsule
- No product-related discolouration – free of bismuth oxide and ferrous compounds
- Radiopaque (290 % Al)



MTA vpt

handmix
10 g powder + 10 ml liquid

REF 1645

MTA vpt AC

25 pcs. Application capsule

REF 1646



The attractively priced MTA material for your day to day practice

Base fill cement for
all restorative materials

Indirect
pulp capping

Direct
pulp capping

Treatment of pulp
following vital amputation





Invisible in everyday life –

Bifix Temp fluorescent

Dual-curing, composite-based
temporary luting material

With its tooth-like, translucent shade, Bifix Temp fluorescent blends harmoniously into the temporary restoration. The aesthetics remain unchanged in natural light and even under UV-A light, the fluorescence does not show through the temporary restoration. Under UV-A light, the material fluoresces very intensely, making it easier to detect and remove the smallest residues of material after removal of the temporary restoration and assisting in the precise placement of the subsequent permanent restoration. This advantage alone makes the usual time-consuming finishing process more efficient.



Bifix Temp fluorescent

5 ml QuickMix syringe
+ accessories

REF 1056

AlignerFlow LC

Fluorescent composite for aligner attachments

Aligner therapies are a regular feature of the dental and orthodontic treatment spectrum, in which attachments play a role in some cases. For the fabrication of precisely formed Aligner attachments, special composites are required. With AlignerFlow LC, VOCO offers you a nano-hybrid composite with a fluorescent effect, especially designed for this purpose. Under UV-A light, the attachments can be checked or any residues after removal precisely identified and removed enamel gently.



AlignerFlow LC

2 × 2 g syringe A1

REF 1526

2 × 2 g syringe A2

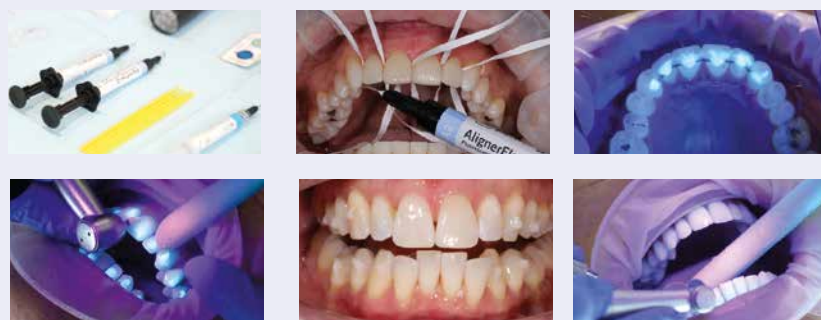
REF 1527

2 × 2 g syringe A3

REF 1528

The advantages at a glance

- Precise application with perfect flow
- Light-curing through the transparent template
- Stable and abrasion resistant throughout the entire treatment period



Source: Dr. Montse Galiano, Spain



Clip F fluorescent

Light-curing filling material
for temporary restorations

Clip F fluorescent impresses with its versatility and user-friendliness. The one-component material is easy to place and mould. Light-curing makes Clip F fluorescent immediately loadable and saliva-proof. The elastic material properties allow residue-free removal with clean and undamaged preparation margins in most cases. Under UV-A light, the detection and removal of small excesses and material residues is considerably easier: especially with thin layer thicknesses that are not easily visible to the naked eye. Clip F fluorescent is suitable for all types of temporary fillings, closures and restorations, including the onlay/inlay technique.



Clip F fluorescent

2 x 4 g syringe

REF 1288

Rebilda DC fluorescent

The first dual-curing flowable core build-up and
post luting system with activatable fluorescence

With the dual-curing composite-based core build-up and root post luting system Rebilda DC fluorescent, VOCO has launched a new member of the Rebilda family. Rebilda preparations have been successfully established worldwide for decades and enjoy a high level of trust in dental practices, particularly due to their dentine-like properties. A fluorescent version has been added to the existing dentin, white and blue shades, once again demonstrating VOCO's innovative character.



50 g Cartridge,
fluorescent dentine,
+ accessories

REF 1399

10 g QuickMix syringe
fluorescent dentine,
+ accessories

REF 1406

Fluoresces under UV-A light
Great visibility of excess material and build-up margins, also at deep subgingival levels

Easy handling
Cuts like dentine,
Flowable consistency – perfect adaption

Excellent aesthetic
Dentine-coloured under natural light and therefore ideally suited for highly aesthetic restorations

Dual-curing
Usable in the root canal for bonding root posts (e. g. Rebilda Post)

Profluorid Varnish + BioMin

Save
25%*

Significantly hardens weakened enamel –
in four pleasant flavours

The established fluoride varnish – VOCO Profluorid Varnish – gets the addition of bioglass from BioMin. This invisible bioglass dissolves in the presence of saliva and releases calcium and phosphate ions, which support the remineralisation of the tooth. In combination with the fluoride from the varnish, crystalline structures form on the tooth surface, which significantly harden acid-weakened enamel, for example.

A real double protection together with the well-known desensitisation!

200 × 0.40 ml SingleDose

Caramel REF 2276
Cherry REF 2277
Mint REF 2278
Bubble Gum REF 2279

50 × 0.40 ml SingleDose

Caramel REF 2270
Cherry REF 2271
Mint REF 2272
Bubble Gum REF 2273



10 ml Tube

Caramel REF 2266
Cherry REF 2267
Mint REF 2268
Bubble Gum REF 2269

Mixed Flavour

48 × 0.40 ml SingleDose
sorted: caramel, cherry,
mint, bubble gum
REF 2274

Profluorid Varnish

Fluoride-containing dental desensitising varnish (5 % NaF)

Hypersensitivity is mainly caused by exposed dentinal tubules. Therefore, the aim of treatment is to seal these tubules. Profluorid Varnish is a fluoride-containing varnish to effectively seal dentinal tubules exposed on the necks of teeth or after cavity preparation.

The advantages at a glance

- Fast desensitisation and fluoride release (22.600 ppm fluoride)
- Easy to apply – moisture tolerant
- Available in seven pleasant flavours
- Economical application in thin layers, high yield

Save
25%*



10 ml Tube

Melon REF 1267 Caramel REF 2232
Mint REF 2234 Cherry REF 2233
Pina Colada REF 2237 Cola Lime REF 2236

200 × 0.40 ml SingleDose

Melon REF 1271 Bubble Gum REF 2239
Mint REF 2231 Cherry REF 2230
Pina Colada REF 2243 Cola Lime REF 2241
Caramel REF 2229

Mixed Flavour

4 × 10 ml tube
sorted: mint, melon,
cherry and caramel
REF 2971

Futurabond U

In the practical *SingleDose*

Behind Futurabond U lies an extensive research and development process that had one goal in mind: to offer a universal adhesive, giving the practitioner nothing but advantages and reliability and thus eliminating the need for any other adhesive systems in the dental practice.

Futurabond U sets new standards in regard to bond strength, and especially with its flexible and versatile application.

50 *SingleDose*

50 × Futurabond U
+ accessories

REF 1571

200 *SingleDose*

200 × Futurabond U
+ accessories

REF 1572



Grandio blocs & Grandio disc

Nano-ceramic hybrid CAD/CAM-material
for permanent restorations

Grandio blocs/Grandio disc impress with their physical values in terms of elasticity, strength and a high filler content of 86 % by weight. As a result, it is closer to the natural tooth than any other material for indirect restorations. Grandio blocs/disc is the material of choice and is superior to conventional zirconium oxide ceramic. The products can be easily finished intraorally and polished to a high gloss.



NEW

Grandio disc multicolor

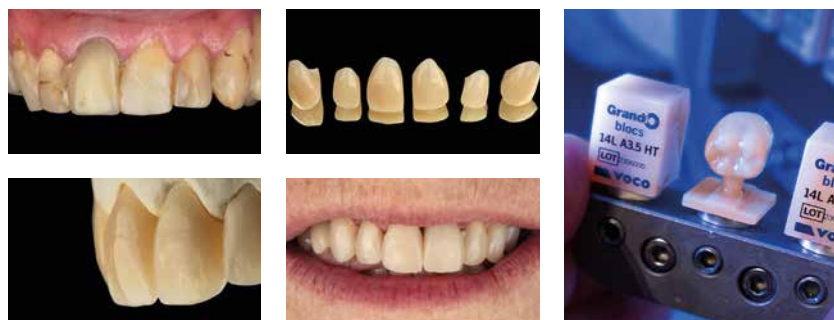
1 × 12 mm (ø 98 mm)

For example:

A2 REF 6249

A3 REF 6250

Further presentations and shades
can be found under www.voco.dental



Source: Dr. Felipe Moura, Brazil

Also
available for
Planmill®



Grandio blocs

5 × no. 12 LT/HT

REF see table

Grandio blocs

5 × no. 14L LT/HT

REF see table

	For the anterior region							For the posterior region			
	A1 LT	A2 LT	A3 LT	A3.5 LT	B1 LT	C2 LT	BL LT	A1 HT	A2 HT	A3 HT	A3.5 HT
No. 12	6003	6004	6005	6006	6007	6008	6009	6012	6013	6014	6015
No. 14L	6018	6019	6020	6021	6022	6023	6024	6027	6028	6029	6030

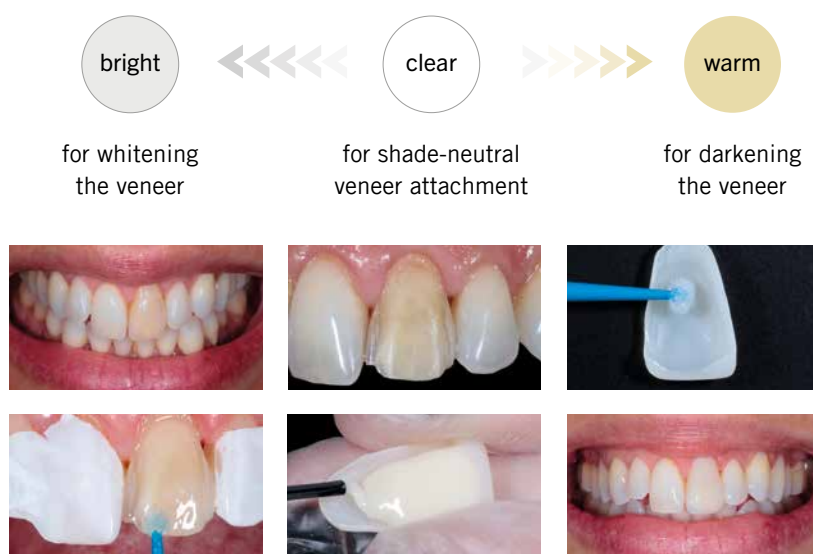
Bifix Veneer LC

Safe and aesthetic –
veneer luting with optimised workflow

The particularly aesthetic light-curing nanohybrid luting composite Bifix Veneer LC filled with 81 % by weight was specially developed for the simple and safe adhesive luting of veneers, inlays and onlays made of composite or ceramic.

The clear shade concept with the three shades bright, clear and warm makes placing veneers easy and enables a positive effect on the aesthetic result. Thanks to the precisely coordinated try-in pastes, choosing the right shade is easy and the final result can be checked in advance.

An intuitive and efficient shade concept for maximum aesthetic success

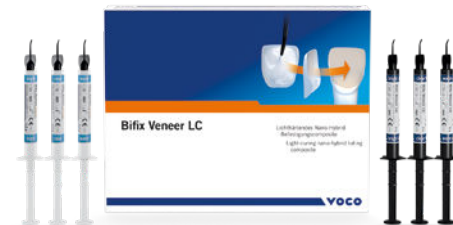
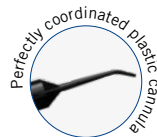


Source: Prof. Carlos Torres, Brazil

Please contact your dental depot or your VOCO dental consultant to order the VOCO Highlights presented here.

*compared with individual purchase

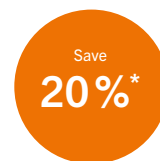
Offers are only valid at participating retail partners. Special prices offered by your depot are always taken into consideration. Errors and omissions excepted. No liability for printing errors.



Bifix Veneer set

3 × 2 g syringe Bifix Veneer LC
3 × 2.5 g syringe Bifix Veneer Try-In
(bright, clear, warm)
+ accessories

REF 1428



Bifix Veneer System set

3 × 2 g syringe Bifix Veneer LC
3 × 2.5 g syringe Bifix Veneer Try-In
(bright, clear, warm)
2 ml syringe Vococid
20 pcs. *SingleDose* Futurabond U
20 pcs. *SingleDose* Ceramic Bond
10 pcs. Sticky Tim
+ accessories

REF 1429

Further presentations and shades
can be found under www.voco.dental

VOCO GmbH

Anton-Flettner-Straße 1-3
27472 Cuxhaven
Germany



[voco.dental](http://www.voco.dental)