

ADHESIVE RESIN CEMENT SYSTEM
PANAVIA™ V5

**ONE SIMPLE & ESTHETIC
CEMENT FOR
ALL YOUR NEEDS**



Since 1983, with the introduction of PANAVIA™ EX resin cement & the original MDP adhesive monomer, Kuraray has provided innovative & exceptional technologies that have improved the quality of adhesion dentistry & influenced the dental industry.

Now we present PANAVIA™ V5, our 5th Version, that is a true dual-cure, fluoride-releasing, color-stable, esthetic, universal resin cement with simplified placement & easy clean-up technique. PANAVIA™ V5 also provides an adhesive milestone by providing self-cure dentin bond strengths equal to a “Gold Standard” light-cure bonding agent, CLEARFIL™ SE BOND.

No resin cement has been able to provide this level of adhesion until now.

SIMPLE FOR TOOTH STRUCTURE:

Multiple research studies have indicated that many dual-cure resin cements require light-curing to provide acceptable bond strengths. The PANAVIA™ V5 Tooth Primer (MDP-Based) with new catalysts solves this challenge and provides exceptionally high bond strengths for all tooth structures in the self-cure mode.

NEW adhesive milestone



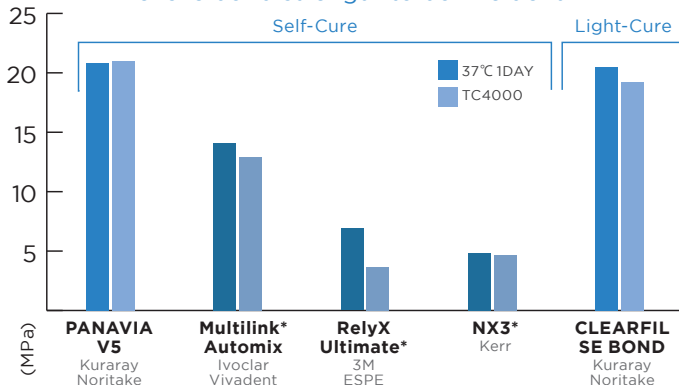
SIMPLE FOR PROSTHETIC:

CLEARFIL™ CERAMIC PRIMER PLUS contains the original MDP adhesive monomer & -MPS silane monomer, which bonds to all silica-based ceramics (including lithium disilicate), zirconia, composites & metals.

Single-bottle primer for indirect restorations!

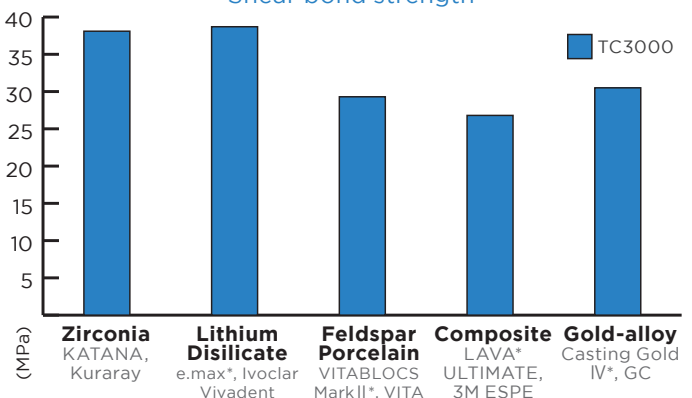


Tensile bond strength to bovine dentin**



* Not a trademark of KURARAY Co., Ltd

Shear bond strength**



**Source: Kuraray Noritake Dental Inc.

Version 1
1983
Adhesive
Resin
Cement

Version 2
1993
Solution to
Post operative
sensitivity with
self-etch primer

Version 3
1998
Improved Marginal
sealing with
dual-cure
Fluoride-releasing

Version 4
2003
Applicable to
LED light-cure

Version 5
"Versatile"

Simplified
Procedure,
Improved Esthetics,
Increased Adhesion

ESTHETIC: FOR PREDICTABLE RESULTS:



PANAVIA™ V5 pastes are available in 5 amine-free¹, color-stable shades with fluoride-release, natural fluorescence & virtually no post-cure color change. These benefits provide clinicians with consistent, predictable, stable long-term esthetics.

ESTHETIC: FIVE SHADES CHOICES

**Universal
(A2)**

Clear

**Brown
(A4)**

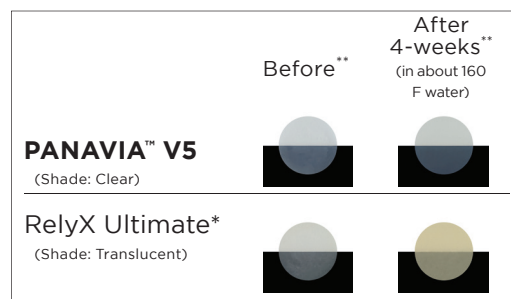
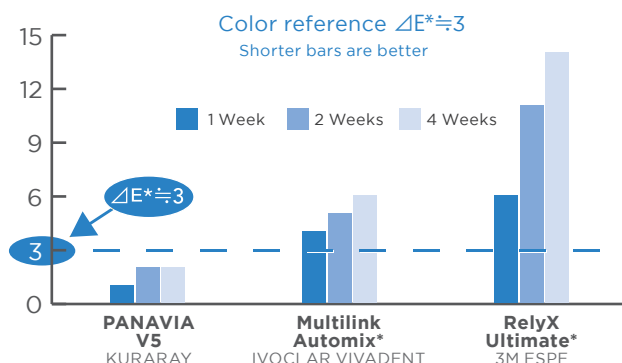
White

**Opaque
(Self-cure Only)**

Due to print limitations, shades may appear slightly different from the actual product.

ESTHETIC: AMINE-FREE¹ COLOR STABILITY

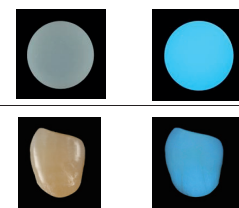
Any color change that is less than $\Delta E^* \leq 3$ cannot be detected by the naked eye. The results indicate that at each time period, the PANAVIA™ V5 did not have any detectable change in color.



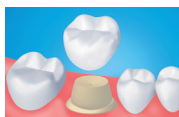
Natural
Fluorescence:

PANAVIA™ V5

Natural Tooth



CLINICAL INDICATIONS



Crowns



Veneers



Bridges



Onlays/Inlays

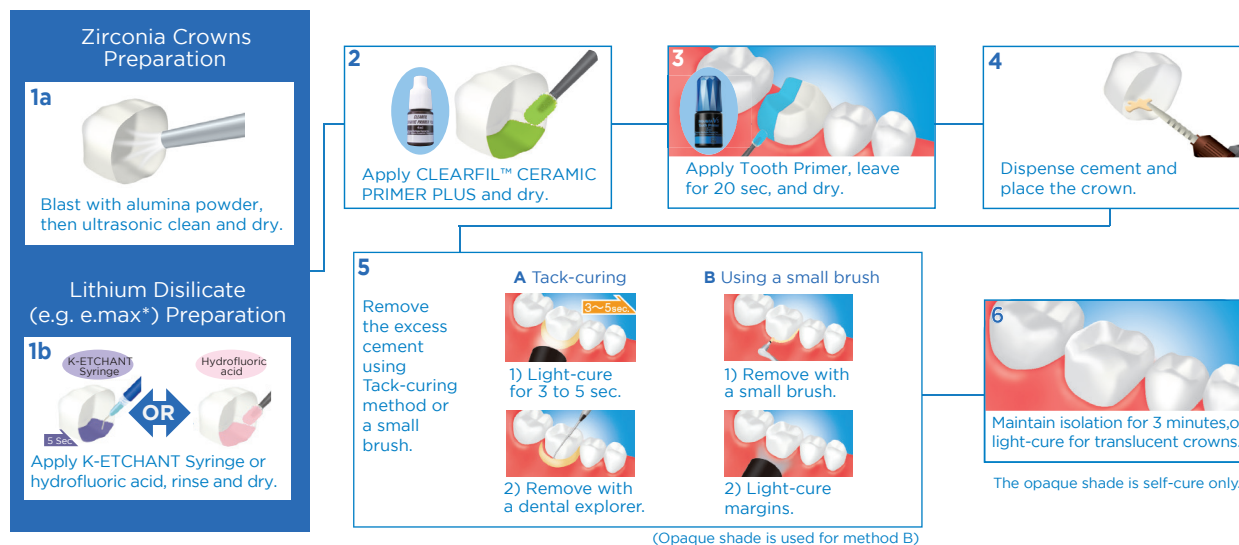


Implants



Posts

BASIC PROCEDURE FOR ZIRCONIA & LITHIUM DISILICATE (E.MAX*) RESTORATIONS



ORDERING INFORMATION



PANAVIA™ V5 Standard Kit
#3601-KA Universal (A2)
#3602-KA Clear

Standard Kit contains:

- Paste: 8.1g (4.6ml) x1
- Try-in Paste 1.8ml x1
- PANAVIA™ V5 Tooth Primer 4ml x1
- CLEARFIL™ CERAMIC PRIMER PLUS 4ml x1
- K-ETCHANT Syringe 3ml x1

Accessories:

- Mixing tip: 15 pcs • Endo tip (S): 5 pcs • Applicator brushes: 50 pcs • Needle tip (E): 20 pcs • Mixing dish (PN): 1 pc



PANAVIA™ V5 Introductory Kit
#3604-KA Universal (A2)
#3605-KA Clear

Introductory Kit contains:

- Paste: 4.2g (2.4ml) x1
- PANAVIA™ V5 Tooth Primer 2ml x1
- CLEARFIL™ CERAMIC PRIMER PLUS 2ml x1

Accessories:

- Mixing tip: 10 pcs • Applicator brushes: 50 pcs • Mixing dish (PN): 1 pc



PANAVIA™ V5 Paste
#3611-KA Universal (A2)
#3612-KA Clear
#3613-KA Brown (A4)
#3614-KA White
#3615-KA Opaque

Paste Syringe contains:

- Paste: 8.1g (4.6ml) x1



PANAVIA™ V5 Try-in Paste
#3621-KA Universal (A2)
#3622-KA Clear
#3623-KA Brown (A4)
#3624-KA White
#3625-KA Opaque
#3630-KA Soft White

Paste Syringe contains:

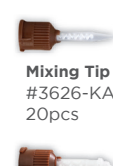
- Paste: 1.8ml x1



PANAVIA™ V5 Tooth Primer
#3635-KA
4ml x1



CLEARFIL™ CERAMIC PRIMER PLUS
#3637-KA
4ml x1



Mixing Tip
#3626-KA
20pcs

Endo tip (S)
#3629-KA
20pcs

RECOMMENDED RELATED PRODUCT

KATANA™ Zirconia ONE

The solution for strength, natural beauty, and workflow efficiency all in ONE block.



YOUR CONTACT

Kuraray America, Inc.

32 Old Slip
FL 7
New York, NY 10005

Phone (800) 879-1676
Fax (888) 700-5200
E-Mail info@kuraraydental.com

Website kuraraydental.com

- Before using this product, be sure to read the Instructions for Use supplied with the product.
- The specifications and appearance of the product are subject to change without notice.
- Printed color can be slightly different from actual color.

"KATANA" is a trademarks of NORITAKE CO., LTD.

"PANAVIA" and "CLEARFIL" are trademarks of KURARAY CO., LTD.



Kuraray Noritake Dental Inc.
1621 Sakazu, Kurashiki, Okayama 710-0801, Japan
Website www.kuraraynoritake.com

R Only

