

UNIVET

DENTAL



QUICK CATALOGUE

MADE IN ITALY EXCELLENCE

100% IN-HOUSE DESIGN

At UNIVET Loupes, we are fueled by a passion for excellence and innovation. Rooted in Italian craftsmanship, **we have set new standards and emerged as global leaders** in optical technologies for professionals.

Our mission is to enhance your vision and comfort by providing cutting-edge solutions that optimize precision and ergonomics.



HIGH QUALITY WITHOUT COMPROMISE

At Univet, we offer a versatile selection of loupes tailored to meet the specific needs of professionals. Each model is crafted to deliver the perfect balance of magnification, comfort, and style, ensuring exceptional performance without compromise.



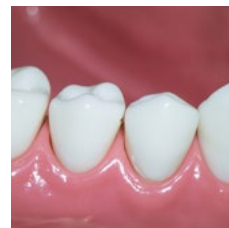
TAILOR-MADE SYSTEMS

Our loupes systems represent the perfect fusion of two distinct elements: innovative frame design and exceptional optical technology. Each pair of loupes is custom-crafted to harmonize with the user's unique physiognomy and professional requirements, resulting in a one-of-a-kind solution tailored precisely to their needs.



Magnifications

RANGE & VIEWS



0 X

Naked eye



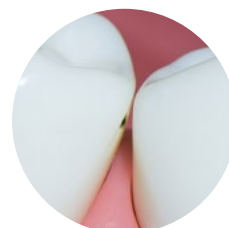
2.0 X

Available for
Galilean Optics



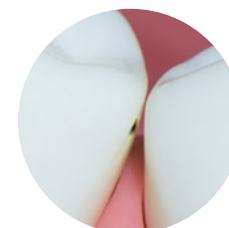
2.5 X

Available for
Galilean Optics



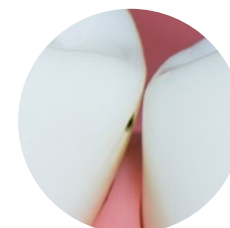
3.0 X

Available for
Galilean Optics



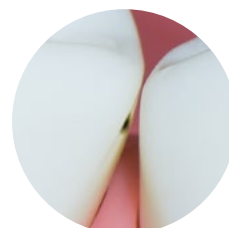
3.5 X

Available for
Galilean, Prismatic and Ergo Optics



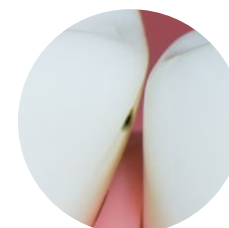
4.0 X

Available for
Prismatic Optics



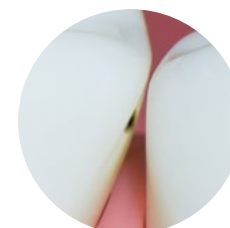
4.5 X

Available for
Ergo Optics



5.0 X

Available for
Prismatic Optics



5.7 X

Available for
Ergo Optics



Our loupes are available in various magnification levels, offering the perfect solution for your specific field and tasks. Univet Loupes are equipped with state-of-the-art optical systems, ensuring the highest image quality. Choose the magnification level that **best suits your unique needs.**

With wide fields of view and exceptional depth of field, our optics provide superior image clarity, accurate color representation, and reduced distortion for a natural viewing experience.

Our Solutions

CUSTOMIZED FOR EVERY NEED



prismatic SYSTEM

Univet Prismatic loupes **XS ULTRA-HD** are engineered and designed to provide higher magnification with exceptional clarity. These loupes elevate your work to the next level through their outstanding definition.

In the realm of prismatic magnification systems, Univet **XS ULTRA-HD** lenses set the benchmark for the highest resolution and edge-to-edge precision. **They are an excellent choice for dentists and surgeons requiring high levels of magnification,** offering exceptional clarity and precision for intricate procedures.



galilean SYSTEM

The Univet Galilean **PRO HD** magnification systems deliver superior optical quality, a wide field of view, and exceptional depth of field, all while maintaining a lightweight design. These systems are highly intuitive and offer remarkable versatility.

Galilean **PRO HD** systems are ideal for dentists, dental hygienists, doctors, veterinarians, and anyone seeking a broad field of view **with easy identification of external reference points, without compromising optical quality.**



Ergo Advanced

IMPROVING COMFORT AND EFFICIENCY



The ERGO Advanced loupes are a cutting-edge solution designed to deliver superior ergonomics and advanced optical performance. These loupes help reduce fatigue and prevent long-term physical strain, ensuring comfort during extended use.

THE UNIVET REFLECTIVE SYSTEM

With improved resolution and greater brightness, this system enhances color recognition and adaptation by the human eye, ultimately boosting performance.

The ERGO Advanced loupes are the ideal choice for professionals who perform delicate tasks over extended periods, offering unparalleled comfort and optical clarity.



Benefits

OF ERGO ADVANCED OPTICS

ADAPTATION TIME

The Ergo Advanced loupes minimize the learning curve and adaptation time compared to other optical systems. Since they don't require working in an unnatural "soldier's stance" position, professionals can quickly adjust to using them with minimal disruption to their workflow.

WEIGHT

Ergo Advanced loupes are approximately 20% lighter than prismatic optics, making them a more practical and comfortable option for extended use.

BETTER IMAGE QUALITY

Ergo Advanced optics deliver superior image brightness with no edge distortions or chromatic aberrations, ensuring better image quality than standard refractive systems.

MULTI-DISTANCE VISION

Ergo Advanced offers unique optical performance, enabling clear vision at both close and intermediate distances, enhancing versatility for professional use.



NATURAL NECK
INCLINATION



EASY
TO USE



BROADER
FIELD OF VIEW



INCREASED IMAGE
BRIGHTNESS



PERIPHERAL
VISION






LIGHTWEIGHT
OPTICS







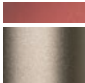



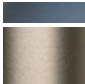


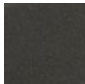










MAGNIFICATION

Magnification	 Galilean	 Prismatic	 Ergo Advanced
2.0X	•		
2.5X	•		
3.0X	•		
3.5X	•	•	•
4.0X		•	
4.5X			•
5.0X		•	
5.7X			•

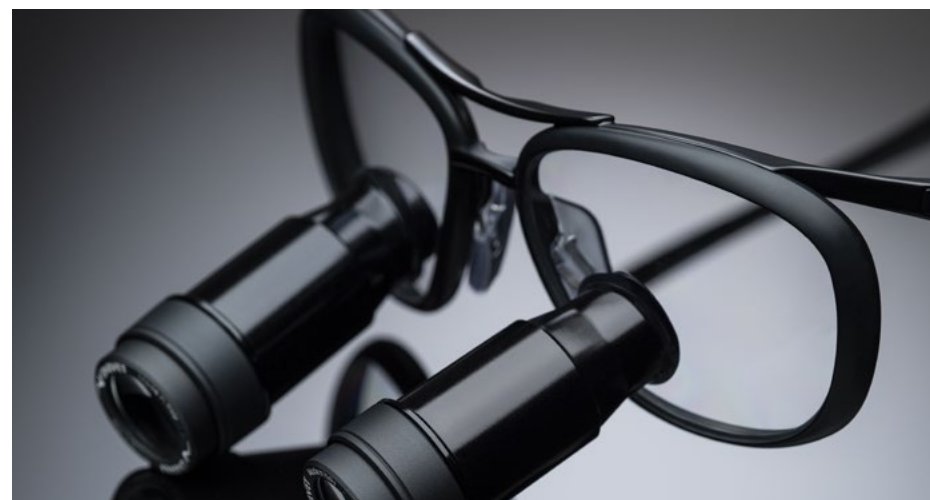
COLOURS CHART

 Frame	 Galilean	 Prismatic	 Ergo Advanced
			
ITA Endura Brown			
			
ITA Midnight Blue			
			
ITA Green Vespa			
			
ITA Black Edition			



ITA

Soft, flowing lines echo historic styles, reinterpreted with modern materials and exquisite finishes. This timeless design transcends fleeting trends, ensuring enduring elegance that never goes out of style.






ONE













SIZE
55□14 - Regular Fitting



MAGNIFICATION

Magnification	 Galilean	 Prismatic	 Ergo Advanced
2.0 X	•		
2.5 X	•		
3.0 X	•		
3.5 X	•	•	•
4.0 X		•	
4.5 X			•
5.0 X		•	
5.7 X			•

COLOURS CHART

 Frame	 Galilean	 Prismatic	 Ergo Advanced
			
ONE Desert Sage			
			
ONE Black Edition			






ONE

The ONE and only! Unique in its lightness and robustness, ONE stands out with its refined and stylish UNIVET design. Engineered for seamless performance, ONE features a new adjustable band and a removable gasket, ensuring maximum eye protection without compromising comfort or style.



MAGNIFICATION

Magnification			
2.0 X	•		
2.5 X	•		
3.0 X	•		
3.5 X			
4.0 X			
4.5 X			
5.0 X			
5.7 X			

COLOURS CHART

			
Frame	Galilean	Prismatic	Ergo Advanced
			
Look / Cool Ruby		not available	not available
			
Look / Cool Emerald		not available	not available



Look
& Cool

The Look & Cool frames remain faithful to the unmistakable Univet style. Hand-varnished nylon and metal inserts make each piece both lightweight and luxurious. This eyewear is stylish for both men and women, offering comfort, functionality, and quality materials that are truly made to be appreciated.



MAGNIFICATION

COLOURS CHART

Magnification	Galilean	Prismatic	Ergo Advanced
2.0 X	•		
2.5 X	•		
3.0 X	•		
3.5 X	•	•	•
4.0 X		•	
4.5 X			•
5.0 X		•	
5.7 X			•

Frame	Galilean	Prismatic	Ergo Advanced
			
ASH Dark Carbon Red			
			
ASH Purple Carbon			
			
ASH Grey Carbon			






ASH















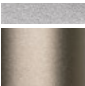



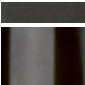

The extreme focus on materials, along with the discovery of new shapes, lines, and dimensions through the reinterpretation of our most iconic models, makes ASH a truly contemporary design.



MAGNIFICATION

Magnification	 Galilean	 Prismatic	 Ergo Advanced
2.0 X	•		
2.5 X	•		
3.0 X	•		
3.5 X	•	•	•
4.0 X		•	
4.5 X			•
5.0 X		•	
5.7 X			•

COLOURS CHART

 Frame	 Galilean	 Prismatic	 Ergo Advanced
			
TECHNE Black Green			
			
TECHNE White Red			
			
TECHNE White Pink			
			
TECHNE Black Edition			



TECHNE

Exceptional Frame Design, offering unmatched lightness and superior comfort. TECHNE is a functional and versatile frame that provides the perfect balance of style and practicality, making it ideal for professionals seeking all-day wearability without compromising performance.



Quick Loupes

Quick Loupes are accessible to everyone, featuring an easy-to-use design with predefined interpupillary distances that can be selected based on your needs.

SIZE

66 □ 15 - Regular Fitting Extended Fitting



Headgear

Designed to eliminate pressure points, ensuring superior comfort and optimal vision through a micro-adjustment system.

SIZE

Adjustable Fitting



Air-X

A versatile loupe with a protective lens that can be worn over prescription glasses. It features a removable and replaceable lens, along with adjustable optics for both height and inclination.

SIZE

66 □ 15 - Regular Fitting



DESIGN
AWARD
WINNER
2021



reddot winner 2020



ASEPTIC
CONTROL



TOUCH
CONTROL

FEATURES

Blue light compliant
Colour temperature: 5700 K
Brightness: 38000 lux
Battery life: 140 min
Headlight weight: 36 g

SPOT SHAPE

Ø (cm)	lux
7,5	38000

ACCESSORIES INCLUDED

2 batteries with a double battery charger
Universal magnetic adapter
UV 525 nm composite filter

OPTIONAL

Custom magnetic adapter (only for Univet TTL Loupes)



PERFORMANCE EXCELLENCE

To complement our loupes, we offer a range of high-performance headlamps. These powerful LED systems deliver uniform lighting across your field of view, ensuring optimal visibility even in the most challenging conditions.



FEATURES

Alexa voice control
Blue light compliant
Colour temperature: 5700 K
Brightness: 38000 lux
Battery life at max brightness: 18 h
Headlight weight: 10,5 g

SPOT SHAPE

Ø (cm)	lux
10,5	38000

ACCESSORIES INCLUDED

Universal magnetic adapter
UV 525 nm composite filter

OPTIONAL

Battery charger
Custom magnetic adapter (only for Univet TTL Loupes)



REMOTE
CONTROL



CRI 70



FEATURES

Alexa voice control
Blue light compliant
Colour temperature: 5700 K
Brightness: 50000 lux
Battery life at max brightness: 9 h
Headlight weight: 15 g

SPOT SHAPE

Ø (cm)	lux
8,3	50000

ACCESSORIES INCLUDED

Universal magnetic adapter
UV 525 nm composite filter

OPTIONAL

Battery charger
Custom magnetic adapter (only for Univet TTL Loupes)



REMOTE
CONTROL



CRI 90



ALEXA VOICE CONTROL

Through integration with Amazon Alexa technology, Lynx can be controlled remotely with voice control, allowing you to operate hands-free, aseptically.



ALEXA VOICE CONTROL

Through integration with Amazon Alexa technology, Lynx Pro can be controlled remotely with voice control, allowing you to operate hands-free, aseptically.

Discover more

www.univetloupes.com



UNIVET LOUPES Spa

Via Giovanni Prati, 87 - 25086 Rezzato (BS) Italy
+39 030 2499411 info@univetloupes.com

cod. 2300409/EN Rev.03 - 05/2025

All specifications and descriptions are subject to change without notice. All rights reserved. Text, images, graphics are subject to copyright and other protective laws. The content of this publication may not be copied, distributed or modified for commercial purposes without written authorization by Univet Loupes Spa.