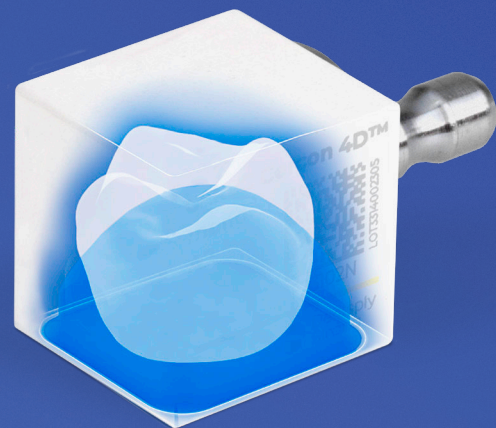




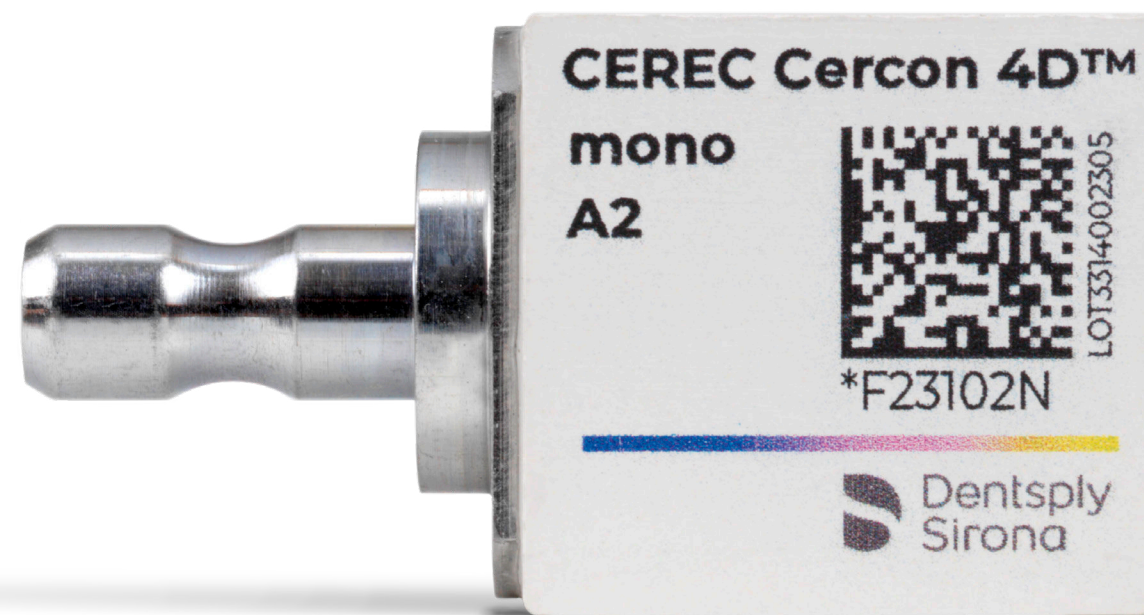
CEREC Cercon 4D™
Multidimensional Zirconia

See zirconia
in a whole
new light.



The one block that has it all.

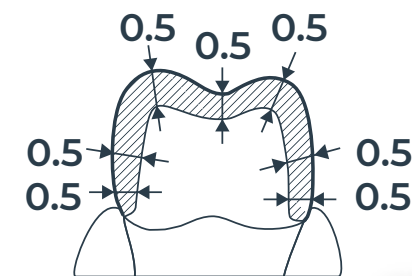
The high strength¹, simplified esthetics and the robust workflow of the CEREC Cercon 4D™ Multidimensional Zirconia Block make it an ideal choice for every CEREC application—from crowns to bridges, anterior to posterior—regardless of clinician experience levels.



¹ 1,100 MPa Dentin Core strength. Dentin area 3-point flexural strength test according to ISO 6872:2024 + Amd.1:2018; N=20. Internal testing at Dentsply Sirona, Requests to consumables-data-requests@dentsplysirona.com

Strength.

For more treatment flexibility and predictability, the 1,100+ MPa material strength¹ enables clinicians to achieve reduced wall thickness—as thin as 0.5mm.



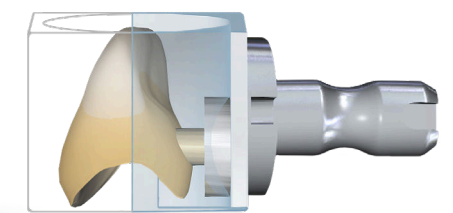
Beauty.

A revolutionary layering and shading technology creates the depth and translucency nature intended.



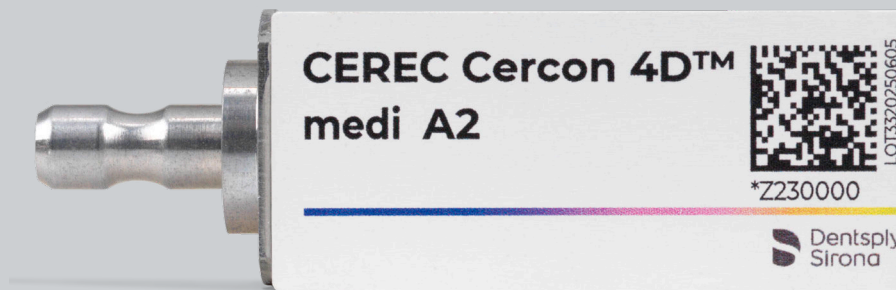
Versatility.

Easy positioning in CEREC software enables simple, efficient manufacturing for: crowns, veneers, inlays, onlays, single-unit implants* and multi-unit bridges.



* when using specialized abutment block

Less stress in the prep step.



Simplified esthetics.

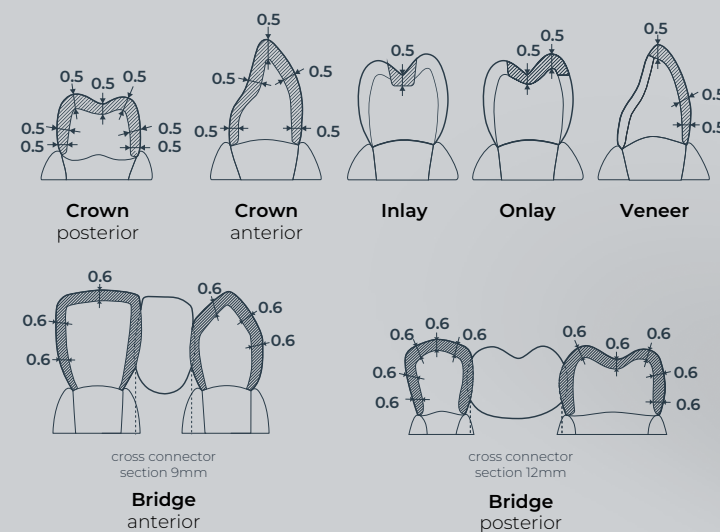
CEREC Cercon 4D™ is the first high-esthetic CAD/CAM zirconia block, with proprietary 3D natural shade and translucent technology. The result is a multidimensional layered look that mimics the natural contours of real dentin and enamel.

Dentists say that the tooth prep phase is the most likely to come with issues and require additional time due to anatomical and case-specific factors.²

The low minimum wall thickness of the CEREC Cercon 4D™ reduces this risk by delivering more design freedom.

Thanks to the 1.100 MPa strength³ of CEREC Cercon 4D™, dentists can achieve a minimum wall thickness of 0.5 mm on all crown surfaces and 0.6 mm on all bridge surfaces—significantly thinner than competitive blocks⁴. Not since gold has any crown material enabled such thin walls—and so much preservation of the tooth structure.

This not only enables better clinical outcomes, it gives dentists more flexibility in space-constrained restorations and reduces the risk of time-consuming re-preps.



2. Dentsply Sirona Chairside Milling Report (N=450), Exevia, April 2022, Internal testing at Dentsply Sirona, Requests to consumables-data-requests@dentsplysirona.com. 3. Dentin Core, 3-point flexural strength test according to ISO 6872:2015 + Amd.1:2018), N=20. Internal testing at Dentsply Sirona, Requests to consumables-data-requests@dentsplysirona.com. 4. Based on published competitive IFUs as of 10.1.25



Robust workflow

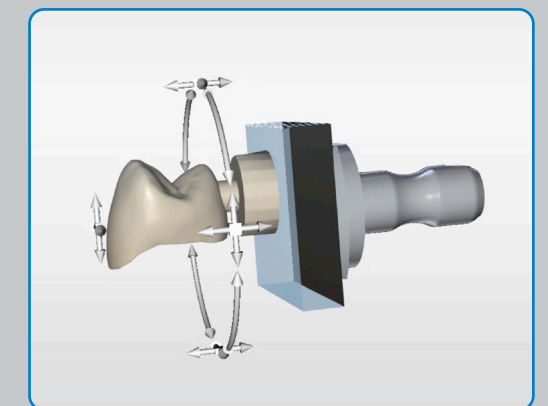
In collaboration with CEREC software, the CEREC Cercon 4D™ block saves valuable time during programming and manufacturing thanks to an automatic preset option. Experienced users have the flexibility to make manual adjustments:

Option 1: Preset positioning

- Ideal for most cases and experience levels, including new users
- Custom preset positioning based on tooth shape and size
- Saves time spent configuring the perfect fit
- Option for manual modification as needed

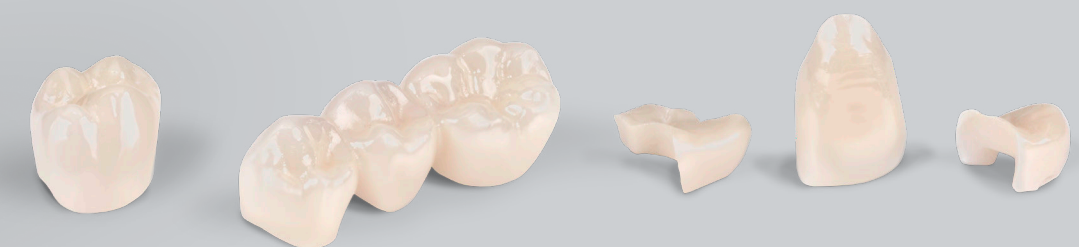
Option 2: Rule of thirds

- For advanced users or rare cases
- Manual vertical adjustment to achieve 2/3 dentin and 1/3 enamel



Applicable to all restorations.

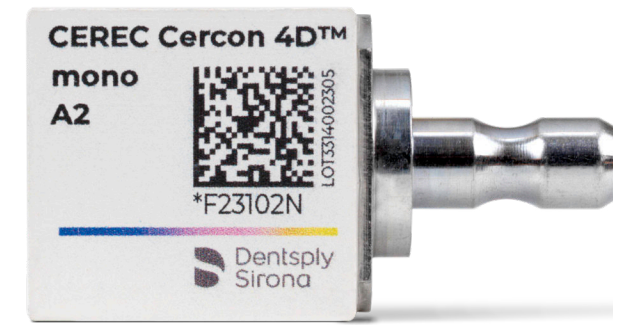
CEREC Cercon 4D™ works with every CEREC application (veneer, inlay, onlay, crown, bridge, single-unit implant restoration*).



* when using the specialized abutment block

Finish for success.

Complete your CEREC Cercon 4D™ restoration with reliable sintering, adhesive and cementation solutions.



Sinter

Cementation



CEREC SpeedFire®

CEREC SpeedFire is a compact and fast dental furnace offering sintering, glazing and crystallization processes. Thanks to its very fast firing times, it enables quick turnaround times for treatments in one single visit.

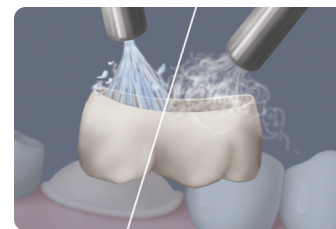
- Firing orders sent automatically via CEREC SW, inLab CAM SW or DS Core
- Rapid sintering times
- High esthetics

5. Prime&Bond adhesive brands vary by market.

Calibra® Universal+ Versatile Resin Cement*

Just one cement with one choice to make.

- Versatile formulation easily used with or without adhesive
- Easy clean-up with a 45-second gel phase and tack-cure window of up to 10 seconds
- Wide range of reliable shades to choose from



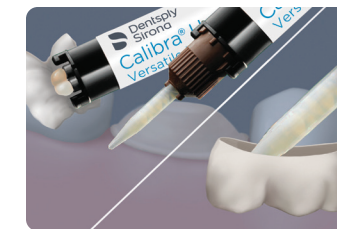
1. Pre-treatment

Sandblast the internal surfaces with 50µm alumina (Al2O3) at a pressure less than 2.5 bar. Do not touch the sandblasted surface if at all possible.



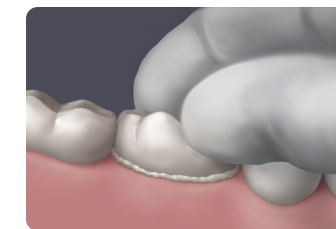
2. Use Prime&Bond® active® for the surface treatment of zirconia

Apply Prime&Bond active® universal adhesive to bonding surfaces of restorations to enhance adhesion. Thoroughly dry with moderate air flow for at least 5 seconds.



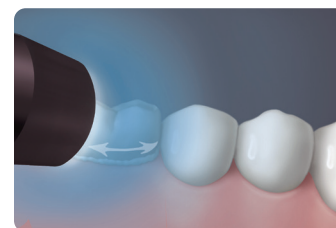
3. Apply Calibra® Universal+ Versatile Resin Cement

Dispense and discard a small amount of material from the dual-barreled syringe. Attach mixing tip. Apply a thin, uniform layer of Calibra® Universal+ Cement to the entire intaglio surface of the restoration.



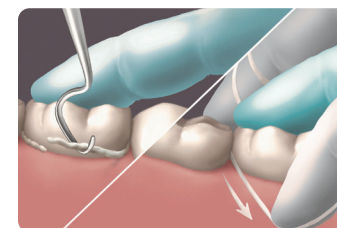
4. Seat restoration

Protect restoration from contamination and movement until the final set of the cement (6 minutes from start of mix or completion of light curing).



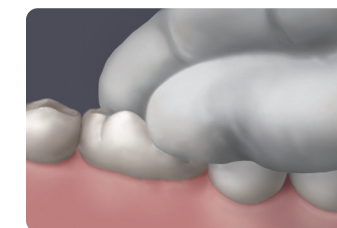
5. Clean up excess

Briefly light cure cement at the margins by constantly moving the curing tip around the margins for no more than 5 seconds per surface (buccal/lingual). Excess cement will reach a "gelled" state after this brief cure. Excess cement will remain in the "gelled" state for approximately 45 seconds following light exposure.



6. Remove excess cement

Stabilize restoration from movement during the gel phase cleanup through the final set.



7. Self cure for non-light transmissible restorations

Following all excess removal, exposed margins may be light cured 20-40 seconds to assist restoration stabilization. Allow Calibra® Universal+ Cement to self cure without disturbing for 6 minutes from start of mix.



8. Finish and polish

Removal of resin flash is best accomplished with the Enhance® Finishing System and polish using Enhance® PoGo® Polishing System (see complete Instructions for Use).



Prime&Bond active® Universal Adhesive

Achieve a reliable, strong bond even under varying moisture levels.

- High initial bond strength⁶ in combination with Calibra® Universal+ Versatile Resin Cement
- Low film thickness does not impact seating of the final restoration⁷
- Virtually no sensitivity⁸

6. Shear Bond Strength to Dentin and Enamel, self-etch (SE) with Adhesive in self-cure mode. Calibra Universal+ Versatile Resin Cement was used with Prime&Bond active® Universal Adhesive (n=6). 7. A. Reis, (2016). Film thickness FE-SEM evaluation of resin-dentin interfaces produced by universal and etch-and-rinse adhesive systems (n=3). 8. User survey started in 2015 and updated every year. Internal data on file. For more information, contact Consumables-Data-Requests@dentsplysirona.com. Internal test with data on file

* Not to be used as an abutment cement

Product Information

CEREC Cercon 4D™ Multidimensional Zirconia



SKU	Crown Blocks
5365460001	CEREC Cercon 4D mono A1 (4 PCS)
5365460002	CEREC Cercon 4D mono A2 (4 PCS)
5365460003	CEREC Cercon 4D mono A3 (4 PCS)
5365460004	CEREC Cercon 4D mono A3.5 (4 PCS)
5365460005	CEREC Cercon 4D mono A4 (4 PCS)
5365460006	CEREC Cercon 4D mono B1 (4 PCS)
5365460007	CEREC Cercon 4D mono B2 (4 PCS)
5365460008	CEREC Cercon 4D mono B3 (4 PCS)
5365460011	CEREC Cercon 4D mono C2 (4 PCS)
5365460012	CEREC Cercon 4D mono C3 (4 PCS)
5365460015	CEREC Cercon 4D mono D3 (4 PCS)
5365460018	CEREC Cercon 4D mono BL2 (4 PCS)

SKU	Bridge Blocks
5365460021	CEREC Cercon 4D medi A1 (2 PCS)
5365460022	CEREC Cercon 4D medi A2 (2 PCS)
5365460023	CEREC Cercon 4D medi A3 (2 PCS)
5365460024	CEREC Cercon 4D medi A3.5 (2 PCS)
5365460025	CEREC Cercon 4D medi A4 (2 PCS)
5365460026	CEREC Cercon 4D medi B1 (2 PCS)
5365460027	CEREC Cercon 4D medi B2 (2 PCS)
5365460028	CEREC Cercon 4D medi B3 (2 PCS)
5365460031	CEREC Cercon 4D medi C2 (2 PCS)
5365460032	CEREC Cercon 4D medi C3 (2 PCS)
5365460035	CEREC Cercon 4D medi D3 (2 PCS)
5365460038	CEREC Cercon 4D medi BL2 (2 PCS)

SKU	Abutment Blocks
5365460041	CEREC Cercon 4D S A1 (3 PCS)
5365460042	CEREC Cercon 4D S A2 (3 PCS)
5365460043	CEREC Cercon 4D S A3 (3 PCS)
5365460044	CEREC Cercon 4D S A3.5 (3 PCS)
5365460045	CEREC Cercon 4D S A4 (3 PCS)
5365460061	CEREC Cercon 4D L A1 (3 PCS)
5365460062	CEREC Cercon 4D L A2 (3 PCS)
5365460063	CEREC Cercon 4D L A3 (3 PCS)
5365460064	CEREC Cercon 4D L A3.5 (3 PCS)
5365460065	CEREC Cercon 4D L A4 (3 PCS)

Glazing Accessories

SKU	
5368273101	Dentsply Sirona Universal Spray Glaze
605540	DS Universal Glaze
601315	DS Universal Glaze Liquid

SKU	
6580067	CEREC SpeedPaste
6611870	Glazing Support Single Unit +A
6583889	Glazing Support Multi Unit

SKU	
5368273100	Dentsply Sirona Universal Spray Glaze Fluo (Fluorescent)

Calibra® Universal+ Versatile Resin Cement

SKU	
607400NA	Syringe Introductory Kit 5 Dual Cure Automix Syringes (4.5 g each) 1 each Shade: Light, Medium, Translucent, Opaque, Bleach 50 Mixing Tips
	Dual Cure Automix Syringe Refill 2 Syringes (4.5 g each), 20 mixing tips
607402NA	Light
607403NA	Medium
607405NA	Translucent
607406NA	Opaque
607407NA	Bleach
607086	Dual Cure Automix Mixing Tips Refill (50)



Prime&Bond active® Universal Adhesive

SKU	
60667341	Standard Refill 1 Bottle (4 ml)
60667347	Intro Kit 1 Bottle (4 ml)/50 Applicator Tips/ 1 CliXdish™ Mixing Dish
60667354	100 Single-Unit Doses 100 Single-Unit Doses/100 Applicator Tips
60667353	50 Single-Unit Doses 50 Single-Unit Doses/50 Applicator Tips



Calibra® Abutment Resin Cement

SKU	
607700	Ultra-Opaque

See why CEREC Cercon 4D™ is a bright idea for your next restoration.



Scan the code to find a wealth of product information and workflow education on our website, www.DentsplySirona.com. Or contact your Dentsply Sirona representative.